

Hydraulic/step type

HLH Standard

Load capacity: 221 to 1544 lb



Recommendation



HLH-400M



The cart can be moved freely and can be elevated from a low position to a high position according to the work environment. It is a lifter with many applications and is only limited by your imagination. Also, based on the JIS standard, the lowering of the table is minimized to 2% or less strokes when left for 15 minutes with the maximum load weight.

Major features of the HLH Series

- Hydraulic cylinder
- Swivel casters with brakes
- Foot pedal type
- Comes with an overloading prevention device *1
- Comes with a rapid traverse device (changes by approximately 20% of the load) *2
- Has a springback mechanism in the release handle.

In an emergency, lowering will stop as soon as you release the handle *3

Note) To raise the lift, tighten the release handle.



Foot pedal for easy height adjustment

Height can be adjusted to match the work line by just stepping on the pedal. This is very useful in improving efficiency at the work site.

Option

- Pump with a rapid traverse device

Major specifications

Oil used	Turbine oil: ISO VG22
Materials	Pump : Urethane type resin spray painting Cylinder : Urethane type resin spray painting Main body : Baked melamine / Powder coating

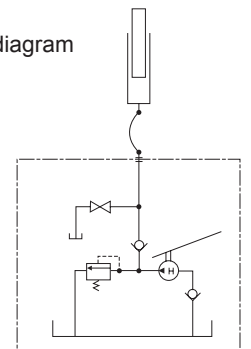
*1 The lifter will not elevate when overloaded.

*2 This is optional depending on the model.

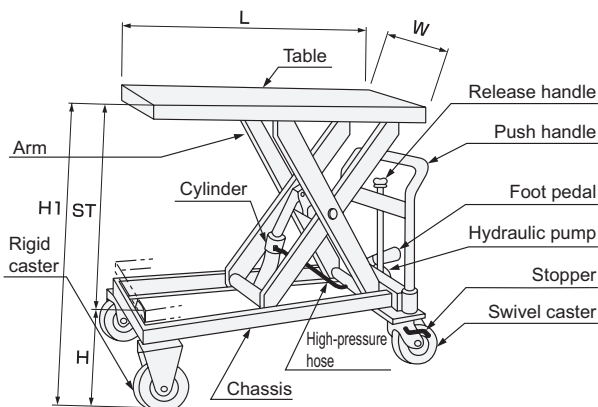
See the specification table for details.

*3 This is not attached to the HLH-120.

Hydraulic circuit diagram



HLH-150





HLH-400SW



HLH-400SW During lowering

Unit: inch

	Model	Load capacity	Table dimensions W x L	Stroke (ST)	Table height (H to H1)	Overall length (LL)	Wheels	Number of pedals Rapid traverse / Standard	Deadweight
Standard	HLH-100	221 lb	13.8×22.4	15.7	7.9 to 23.6	30.1	φ3.9 rubber	-/8	41.9 lb
	HLH-120	265 lb	15.7×28.3	19	9.3 to 28.3	36.6	φ3.9 rubber	-/18	66.1 lb
	HLH-150	331 lb	19.7×31.5	43.5	13.2 to 57.5	39.8	φ3.9 rubber	-/46	150 lb
	HLH-200	441 lb	19.7×31.5	21.3	10.2 to 31.5	39.8	φ3.9 rubber	-/28	99 lb
	HLH-300	662 lb	23.6×35.4	48	16.1 to 64.2	44.1	φ5.9 rubber	25/66	220 lb
	HLH-400S	882 lb	19.7×31.5	20.7	10.8 to 31.5	39.8	φ3.9 urethane	-/48	136.7 lb
	HLH-400SW		19.7×23.6	27.4	14.4 to 41.3	32.1	φ5.1 rubber	-/57	154 lb
	HLH-400M		23.6×35.4	23.6	13 to 36.6	44.1	φ5.9 rubber	18/42	176 lb
	HLH-400L		23.6×47.2	34.2	13 to 47.2	55.9	φ5.9 rubber	25/66	220 lb
	HLH-700	1544 lb	23.6×35.4	23.6	13 to 36.6	44.1	φ5.9 urethane	25/66	176 lb

* HLH-120's push handle can be folded.