

Hydraulic/Electric Type

HFH Standard

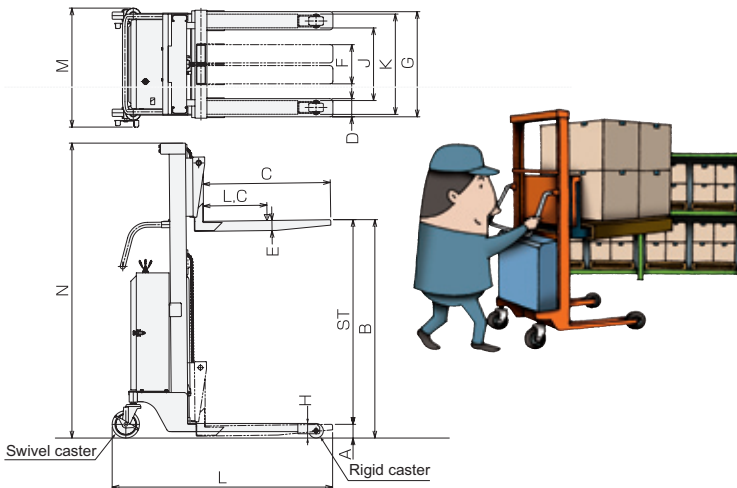
Load capacity: 882/1323 lb

Standard type which can work easily even in narrow gaps

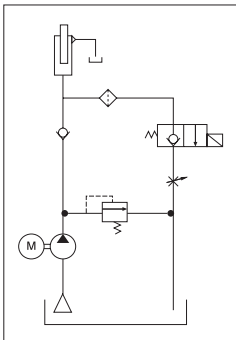
Useful in transporting pallets between narrow spaces and walkways.

Major features of the HFH Electric Type Series

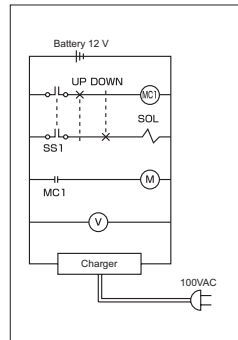
- Easy-to-operate battery type lifter
- Easy lifting and lowering operation using the soft touch lever switch
- Safe design to minimize the impact of lifting
- Equipped with an "EB" long-life battery used in golf carts
- Can be charged anytime, anywhere using the provided automatic charger (100 VAC)
- Self-winding charger cord (2 m) that prevents dragging
- Can lift or lower the maximum weight continuously for 30 times in 1 full cycle charge
- Comes with an easy to view remaining battery gauge
- Comes with an overloading prevention valve
- PC flow control (maintains constant descent speed despite changes in the weight of the load)



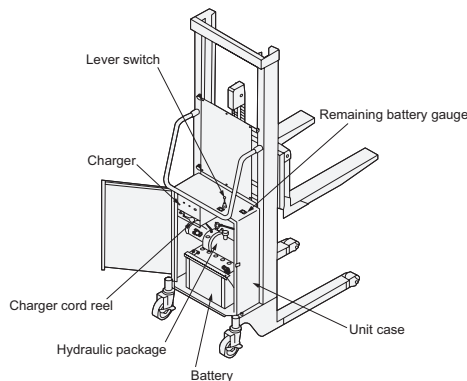
Hydraulic circuit diagram



Electric circuit diagram



Inside unit



HFH-D400-12

Unit: inch

	Model	Load capacity	Load center distance (LC)	Fork height				Fork dimensions				Leg dimensions			Wheel dimensions		External dimensions			Lifting duration (loaded/unloaded) (in seconds)	Battery	Motor 12 VDC kW	Deadweight
				Minimum height A	Minimum height *A	Maximum height B	Stroke (ST)	Length C	Width D	Thickness E	Slide outside width F to G	Height H	Internal width J	External width K	Rigid caster	Swivel casters with brakes	Total length L	Total width M	Total height N				
Standard	HFH-D400-9	882lb	13.8	3	3.7	35.4	32.5	27.6	3.9	2.2	8.5 to 22.8	3.1	15.7	21.7	3.1	5.9	47.8	25.7	63.8	10/14	EB65	0.7	315lb
	HFH-D400-12					52	7/11													355lb			
	HFH-D400-15					75.6	12/18																
	HFH-D600-9	1323lb	15.7	3.1	3.7	35.4	32.3	31.5	3.9	2.2	8.6 to 22.9	3.1	15.7	21.7	3.1	5.9	52	25.7	65.4	11/15	EB100	0.7	366lb
	HFH-D600-12					53.6	14/20													388lb			
	HFH-D600-15					77.2	18/25																

• The swivel casters have rubber wheels and the rigid casters have urethane wheels. * When the fork is placed on the legs the minimum height will be increased by about 13.5 to 19mm.